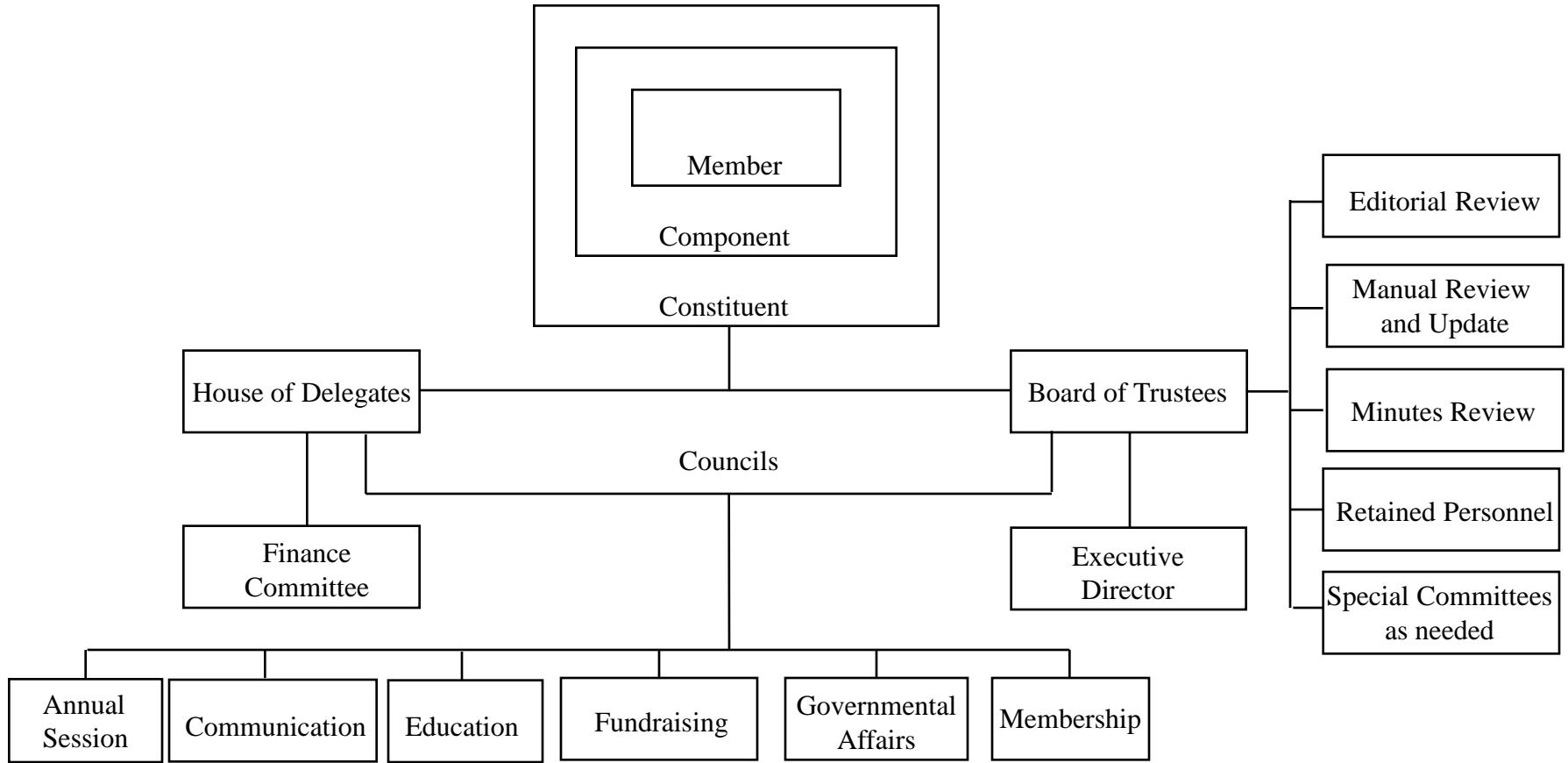


Florida Dental Hygiene Association Organizational Chart



Component

There are 6 components in the state of Florida.

District

There are 6 geographic districts in FDHA, each represented by a Trustee on the FDHA BOT.

Constituent

Florida is 1 of 48 constituents in ADHA. There is 1 for each state and 1 for the District of Columbia (with the exception of CA and AL).